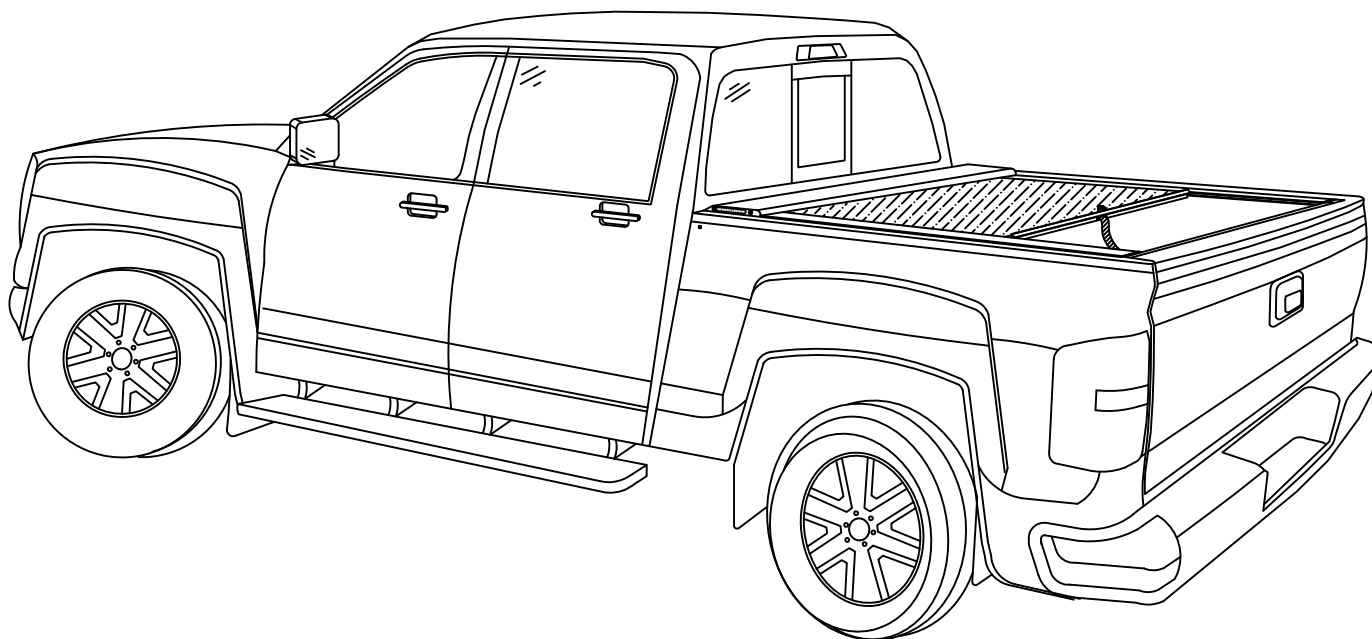




2014 Chevrolet Silverado/GM Sierra Install Guide

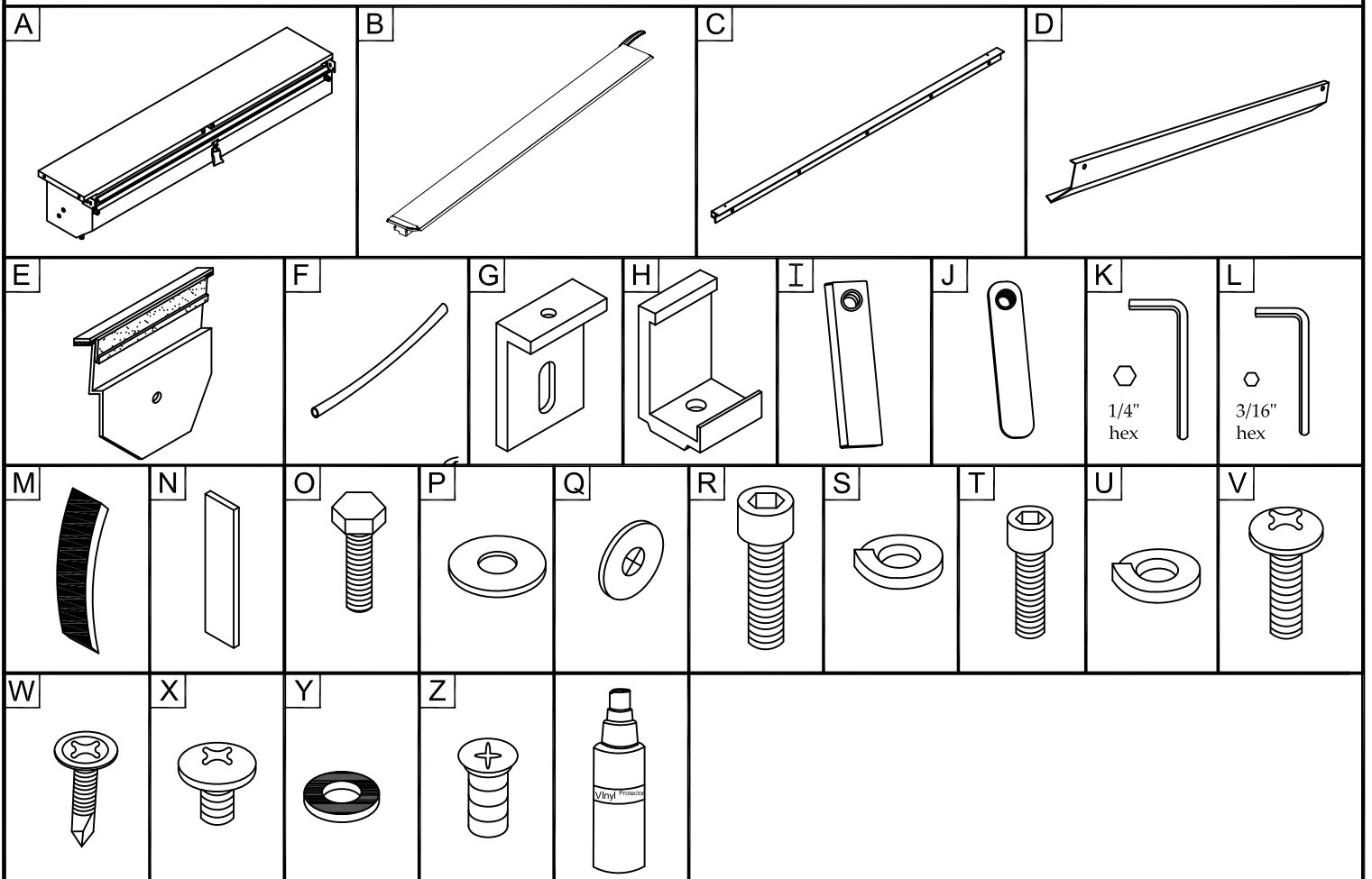


**product code:
220/ 221/ 222**

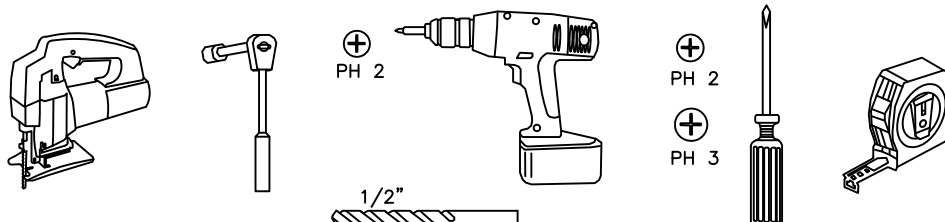
**800-952-7655
www.rollnlock.com**

PARTS LIST

Item	Part Name	Qty.	Item	Part Name	Qty.	Item	Part Name	Qty.
A	Housing	1	J	Cargo Nut	2	S	5/16" Lock Washer	4/6
B	Track	2	K	Allen Wrench (1/4")	1	T	1/4" Socket Cap Screw	2
C	Tailgate Extrusion	1	L	Allen Wrench (3/16")	1	U	1/4" Lock Washer	2
D	Cargo Shield	1	M	Butyl Caulk Strip	2	V	#10-24 Screw	2
E	Housing Bracket	2	N	Shim	4	W	#8x3/4" Tap Screw	7
F	Drain Tube	2	O	1/4-20 x 1" Bolt	4	X	1/4-20 x 3/8" Bolt	4
G	CB Track Bracket	2	P	1/4" Flat Washer	4	Y	Rubber Washer	4
H	#3M Bed Clamp	4/6	Q	Nylon Retaining Washer	4	Z	Lid Screws	2
I	Threaded Tang	4	R	5/16" Socket Cap Screw	4/6		Vinyl Protector	1

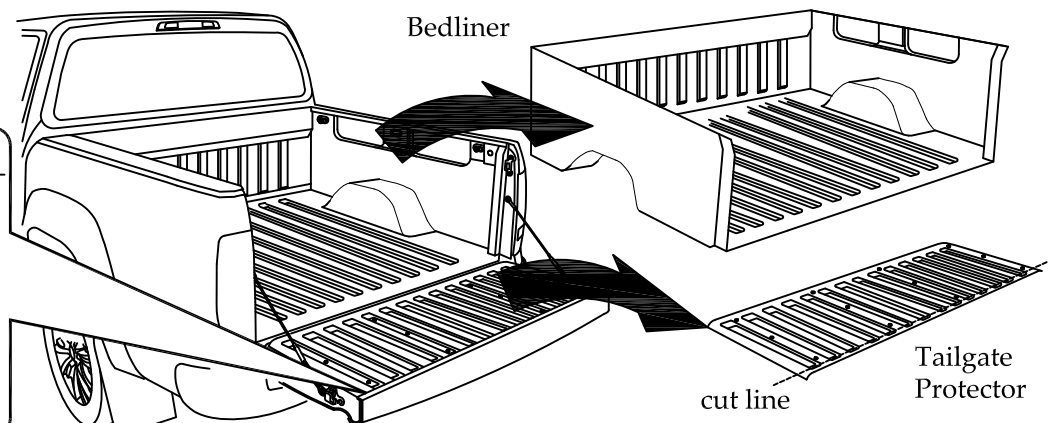
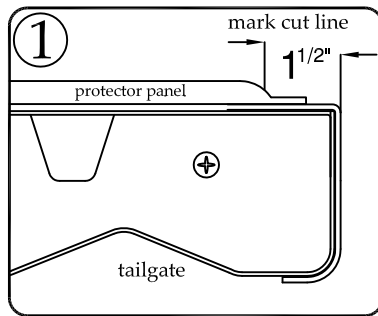


TOOLS NEEDED

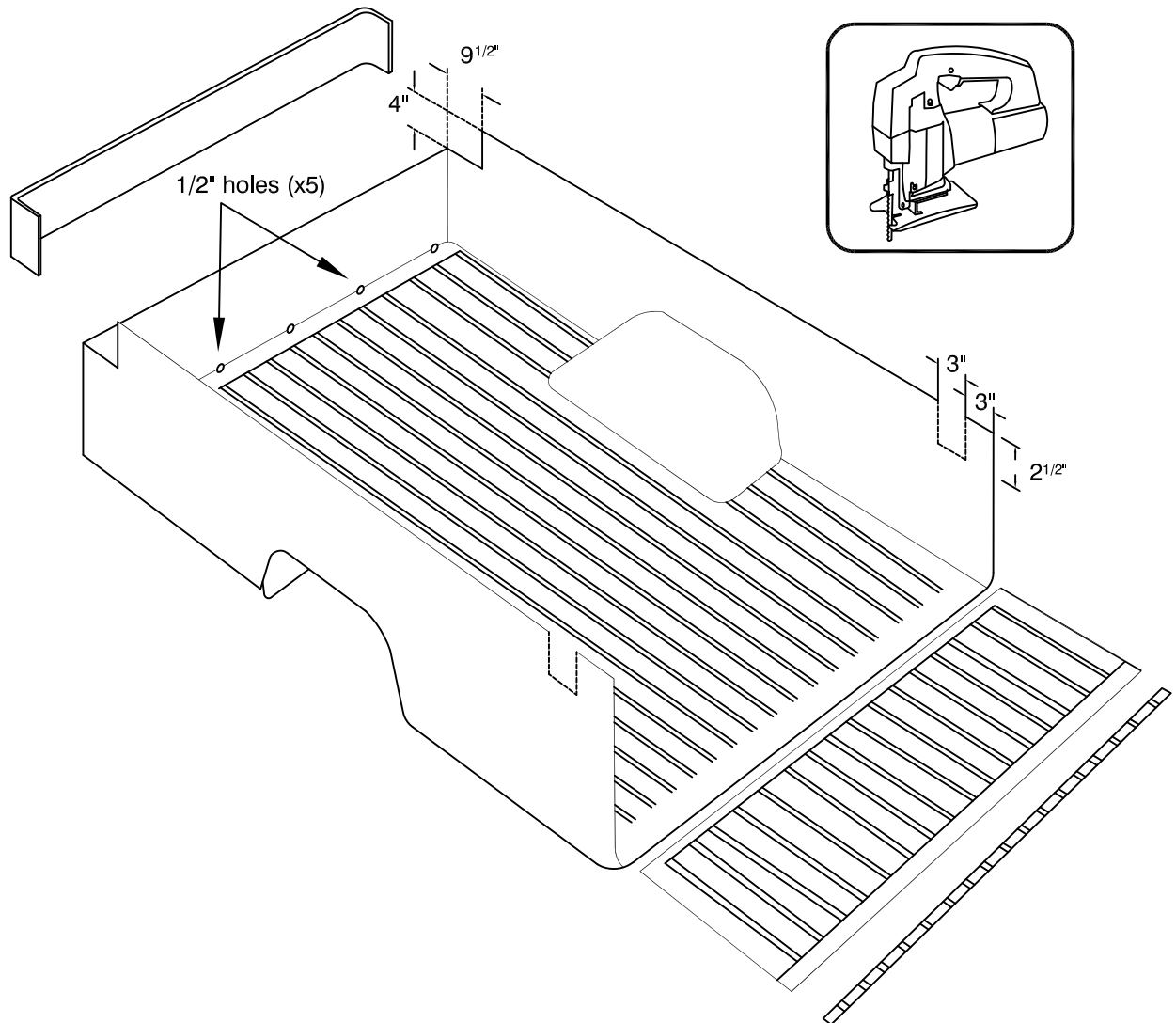


1a

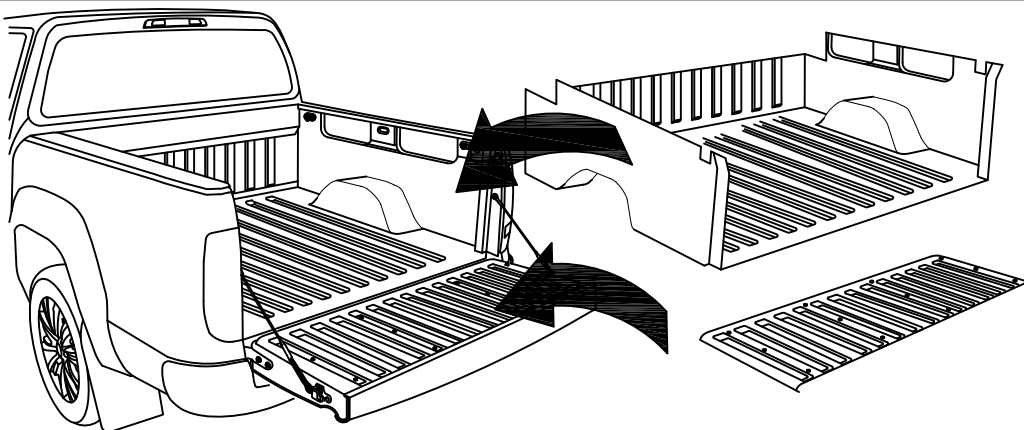
*IF NO BEDLINER
PRESENT PROCEED
TO PAGE 4 - STEP: 1



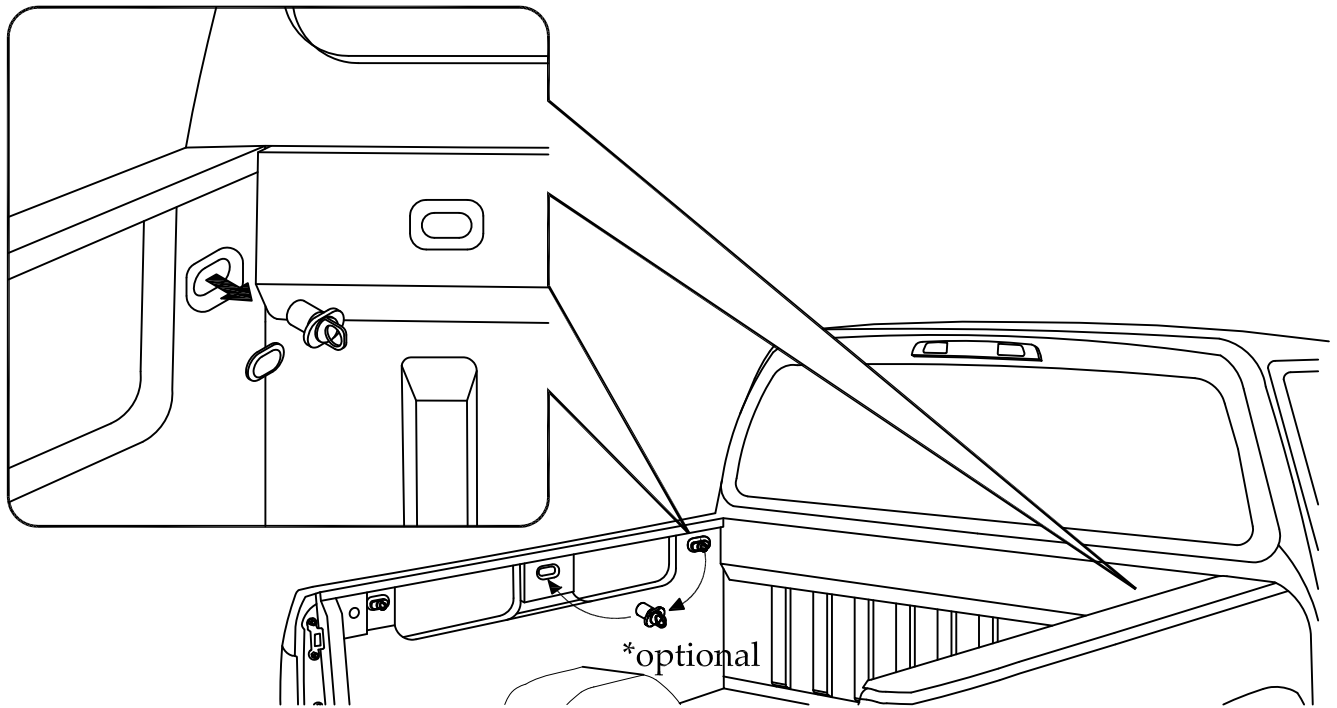
1b



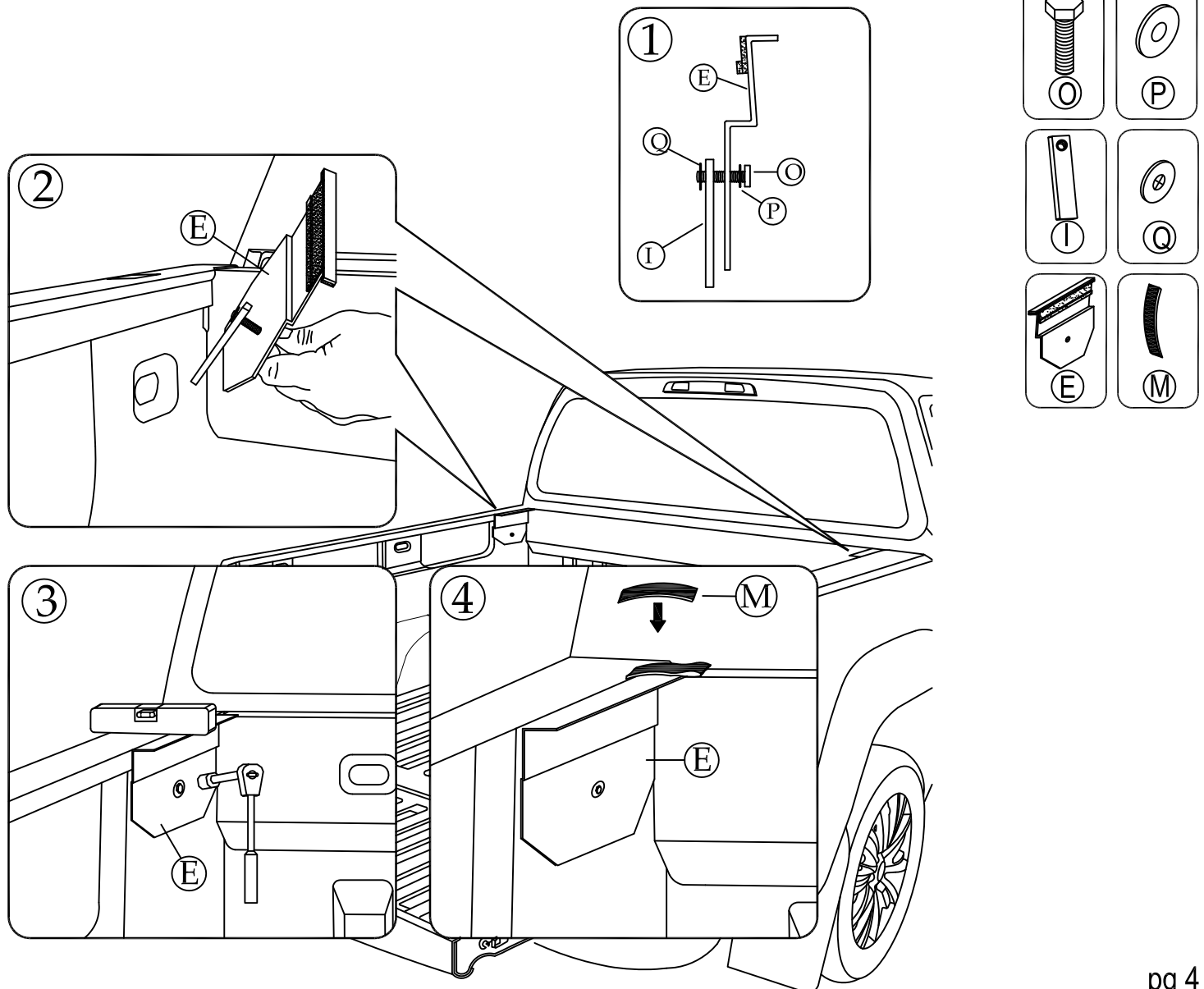
1c



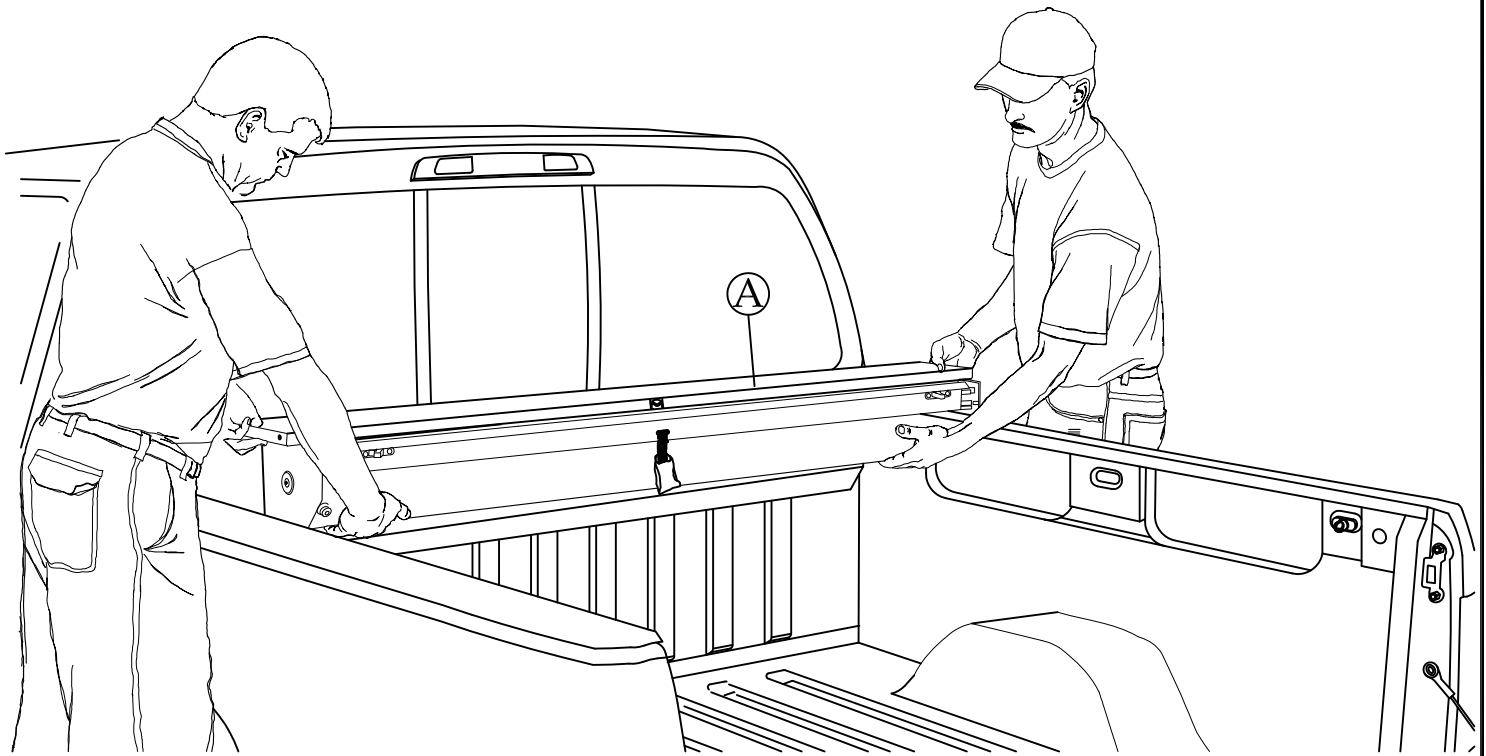
1 LHS = RHS



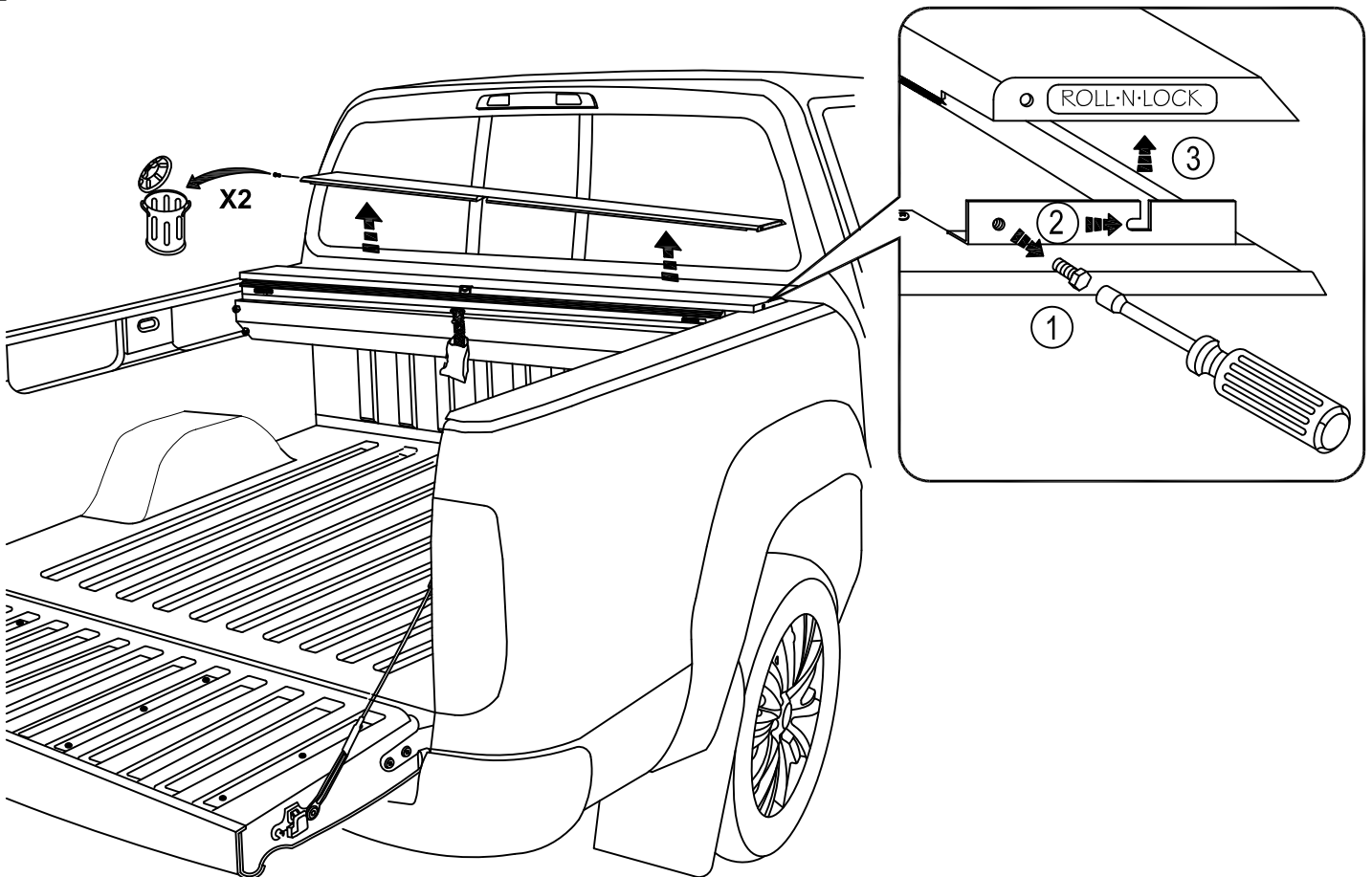
2 LHS = RHS



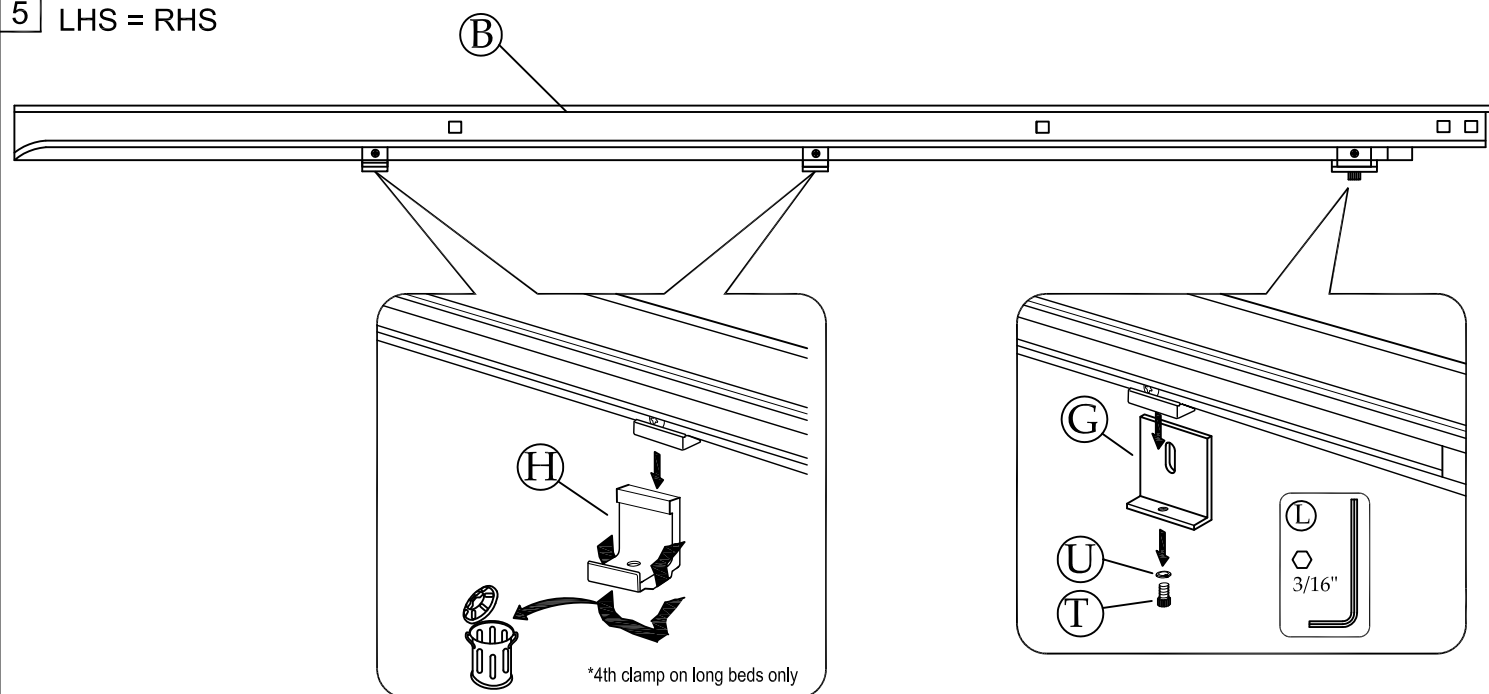
3



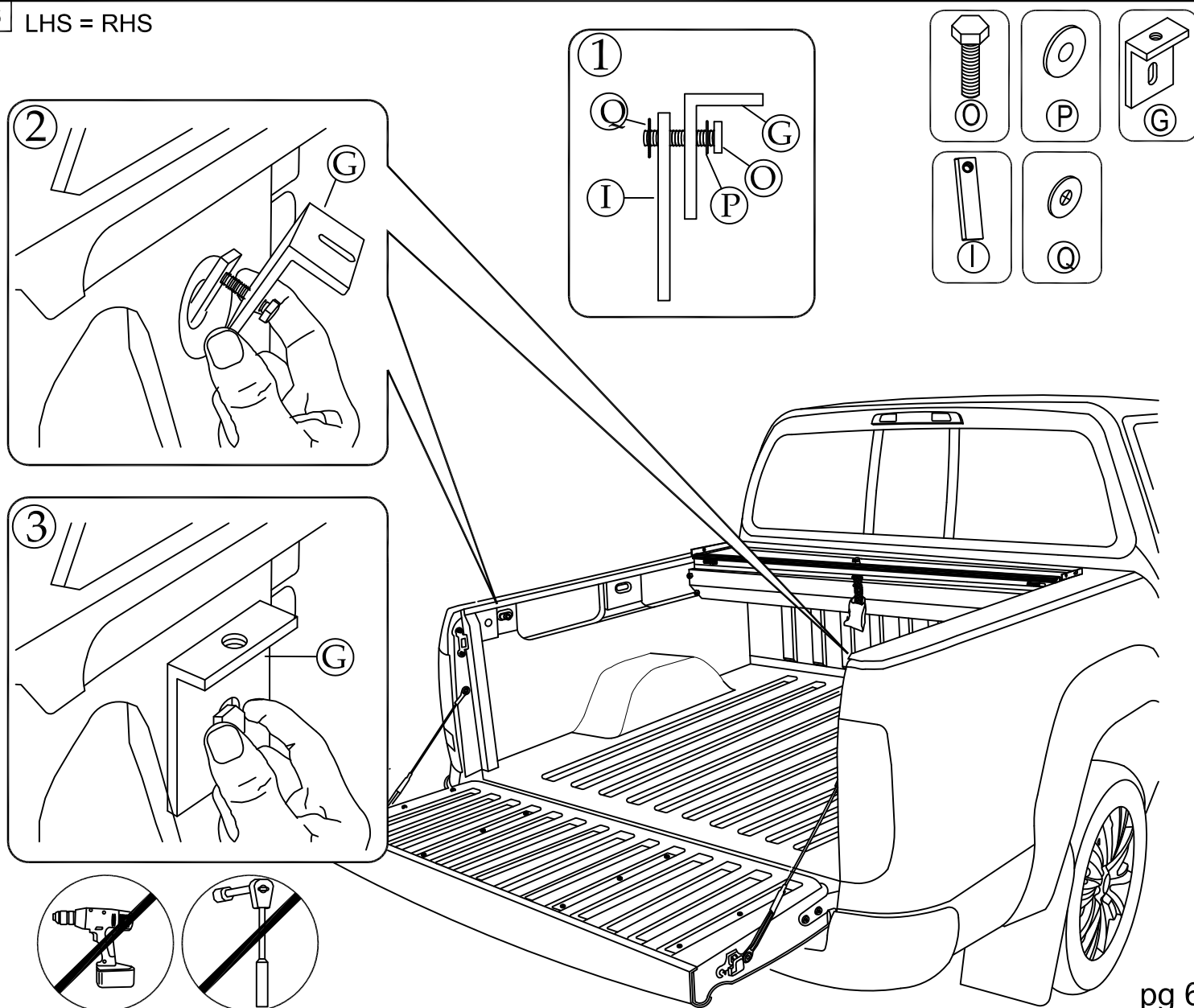
4 LHS = RHS



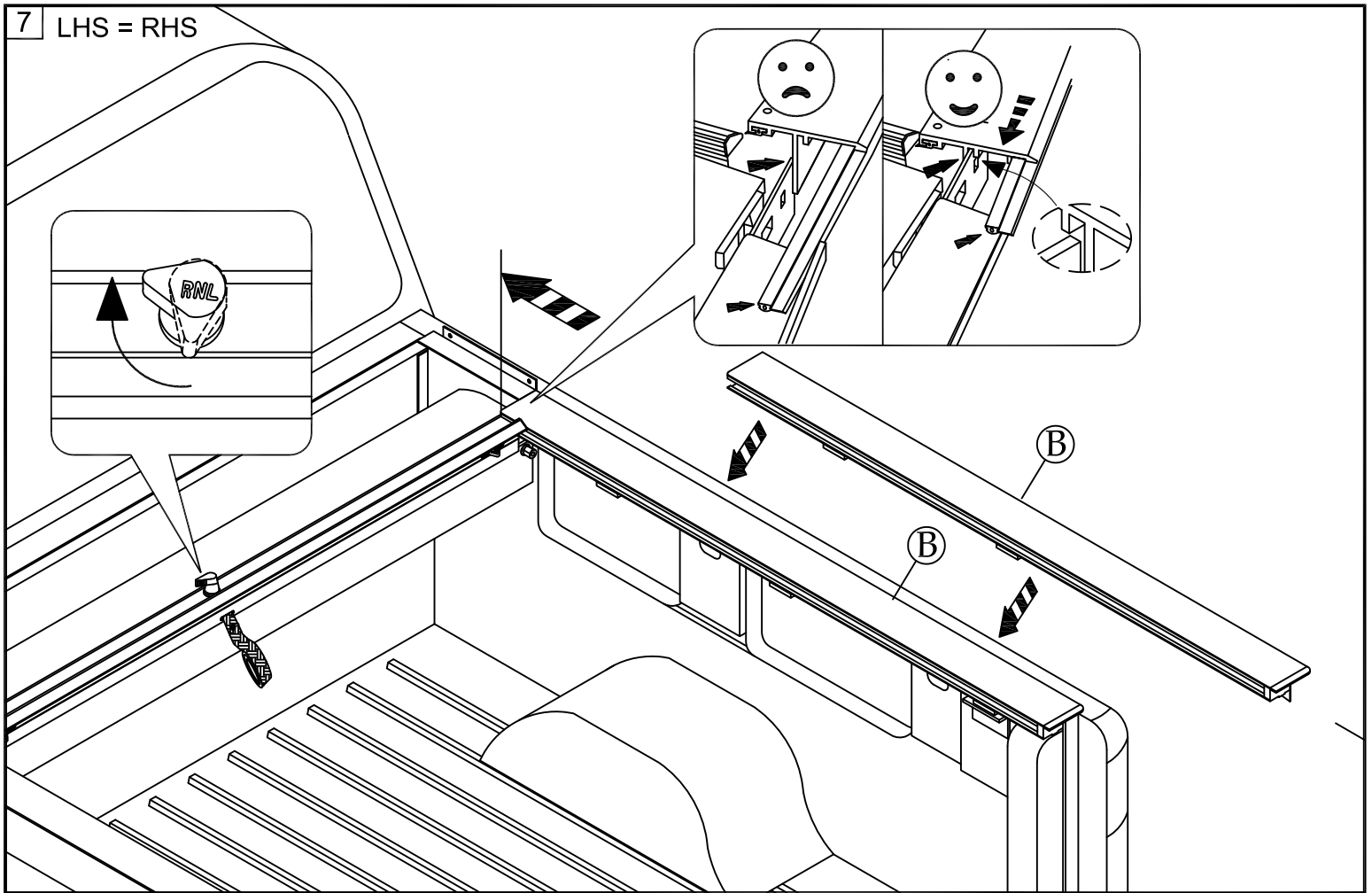
5 LHS = RHS



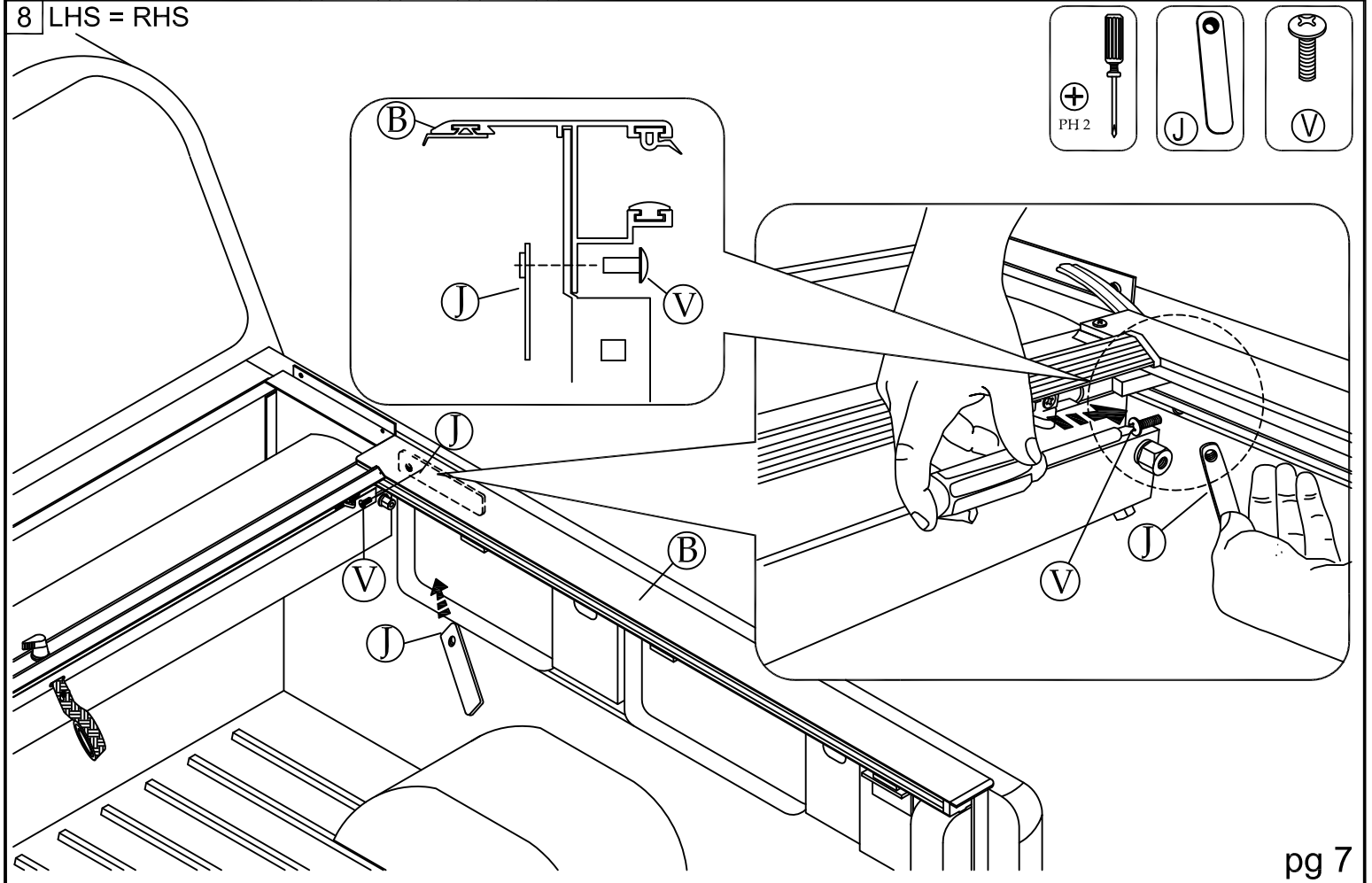
6 LHS = RHS



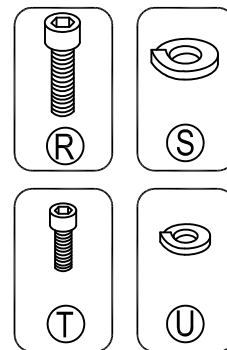
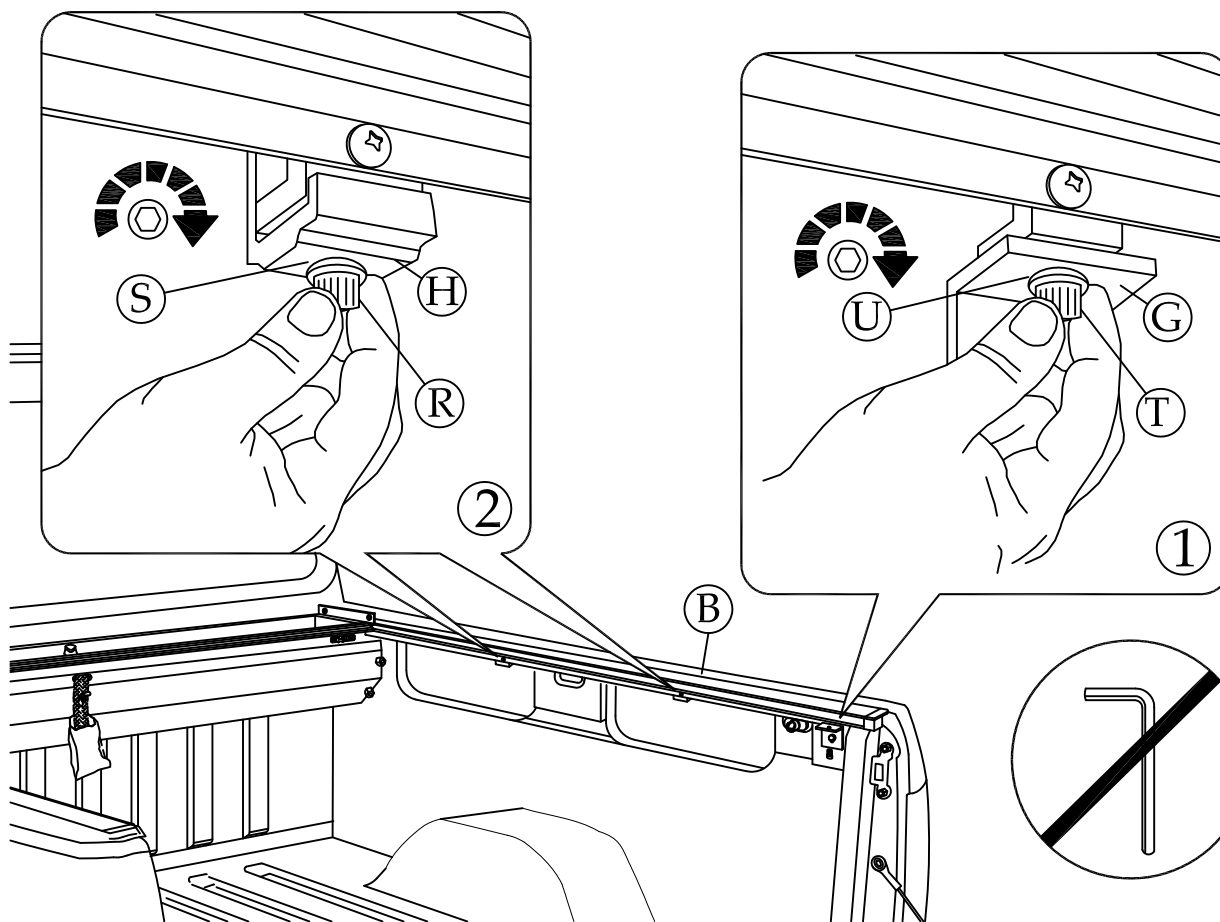
7 LHS = RHS



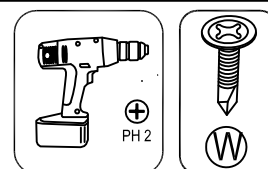
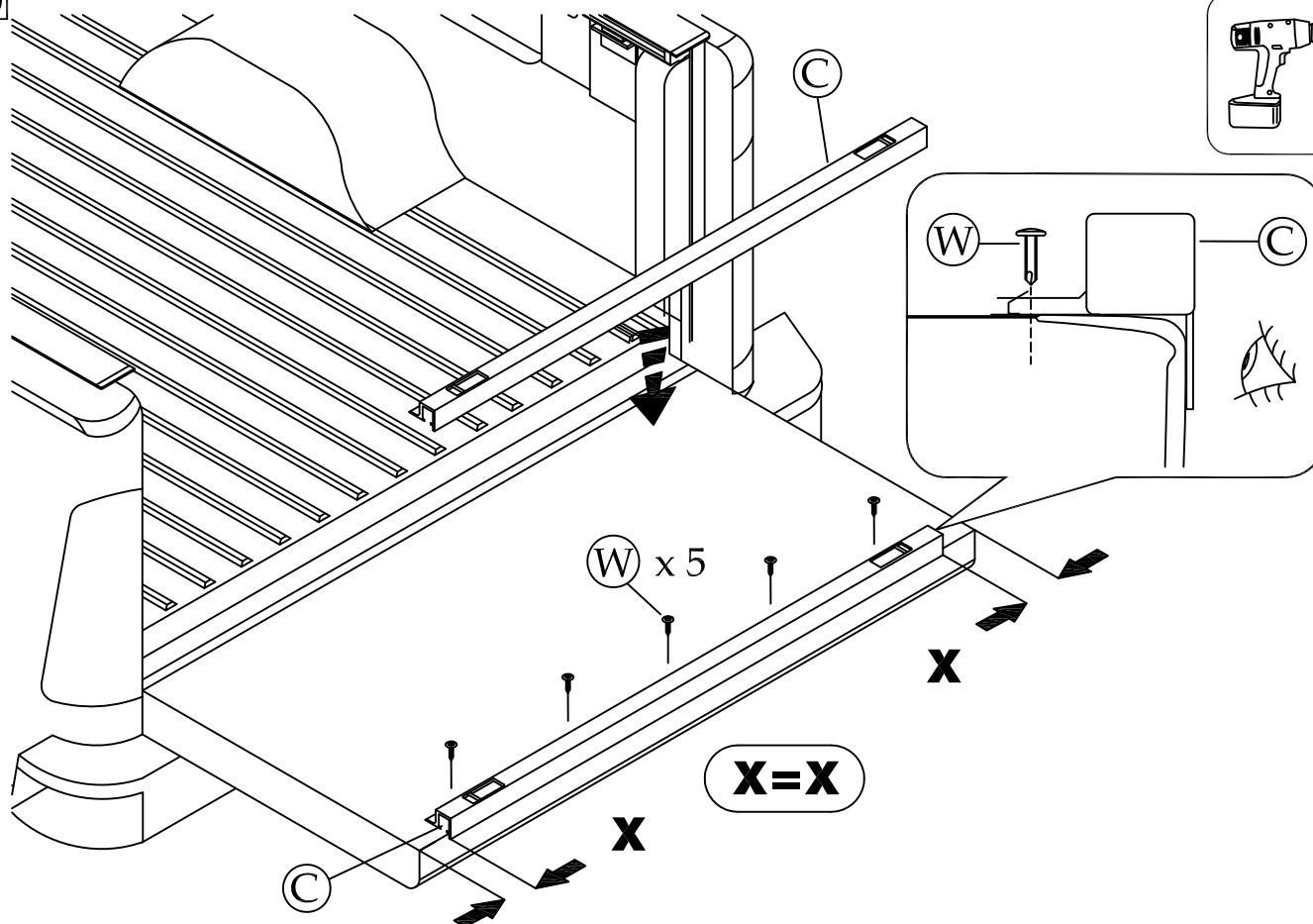
8 LHS = RHS



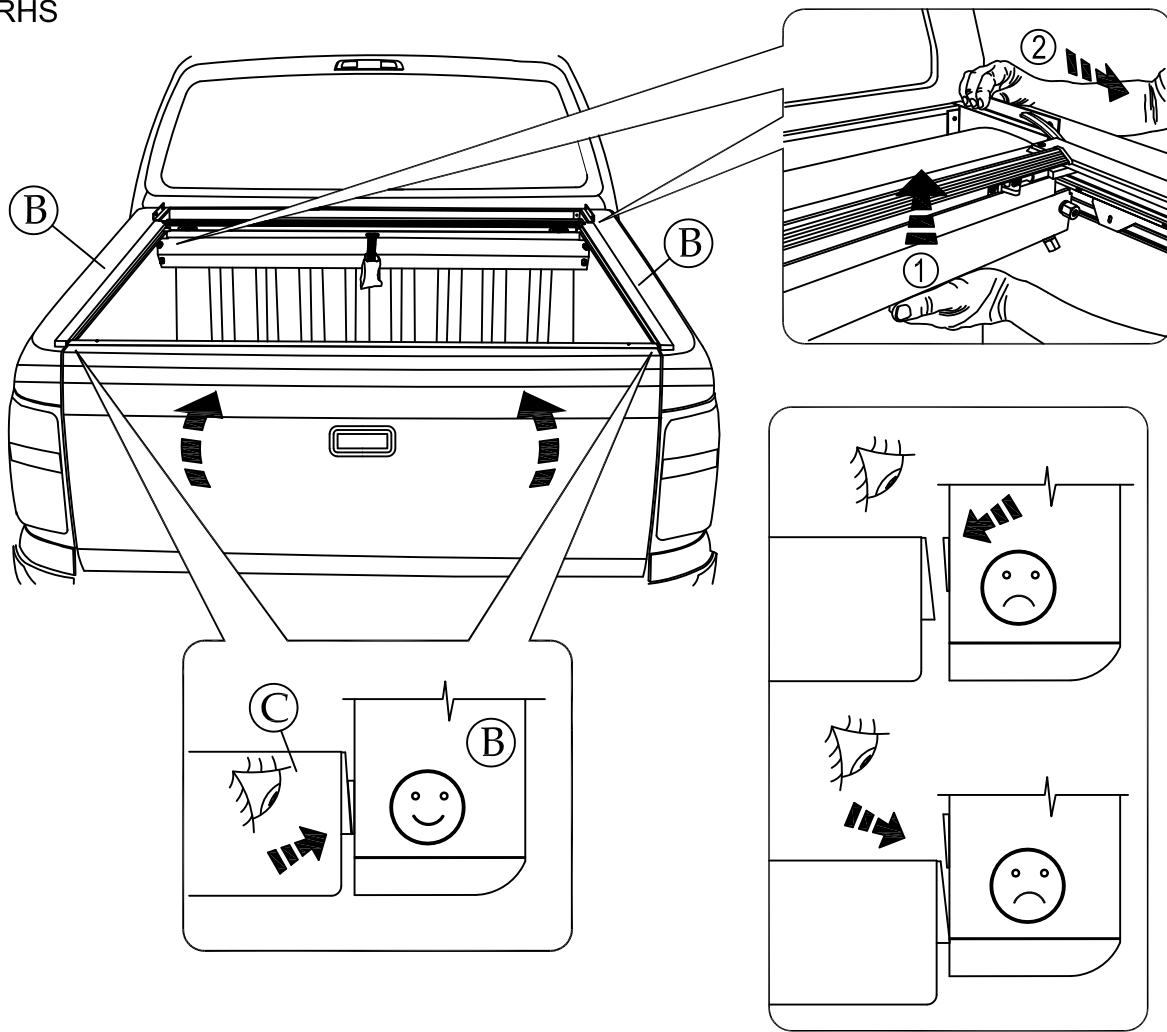
9 LHS = RHS



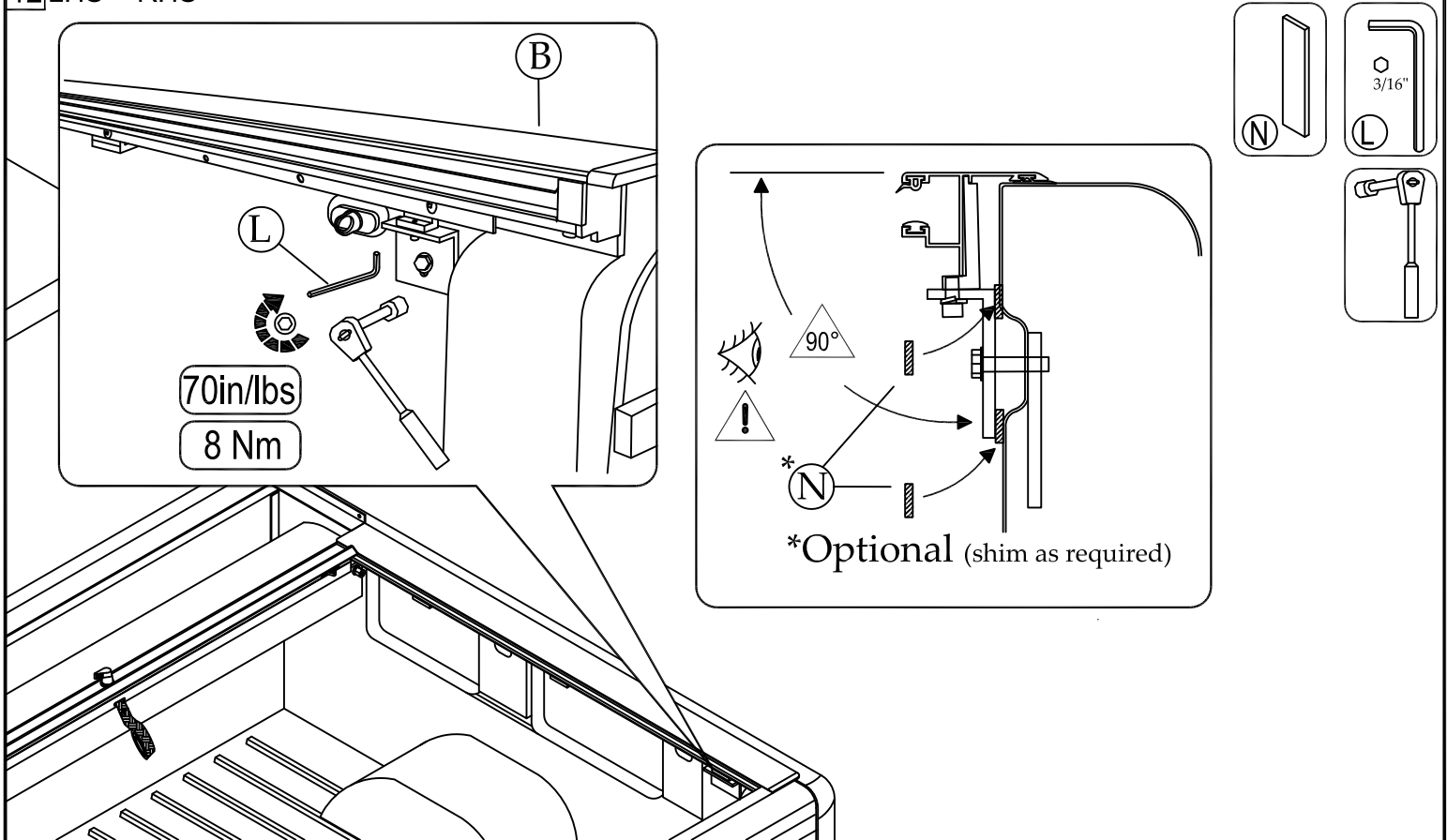
10



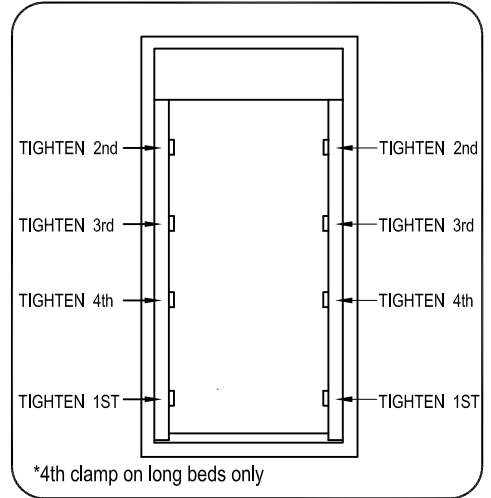
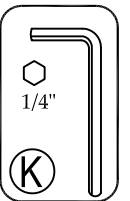
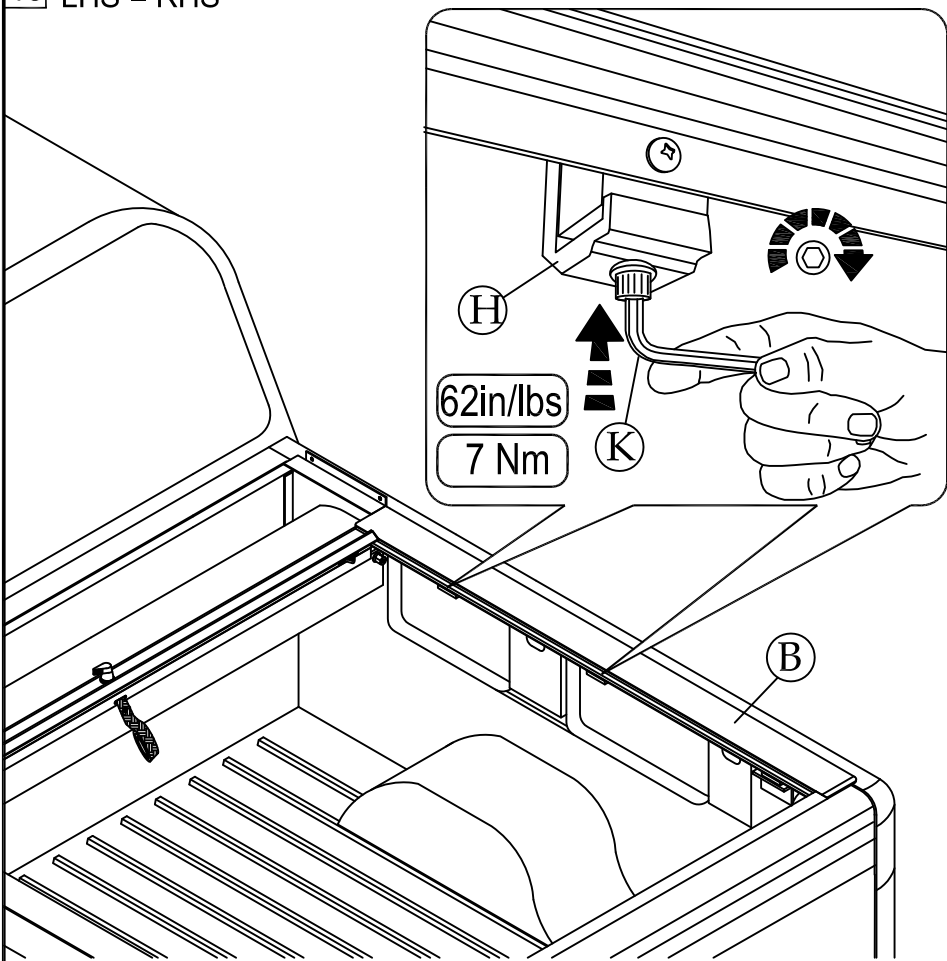
11 LHS = RHS



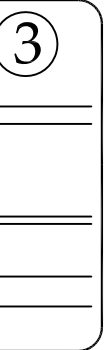
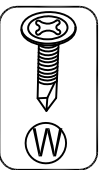
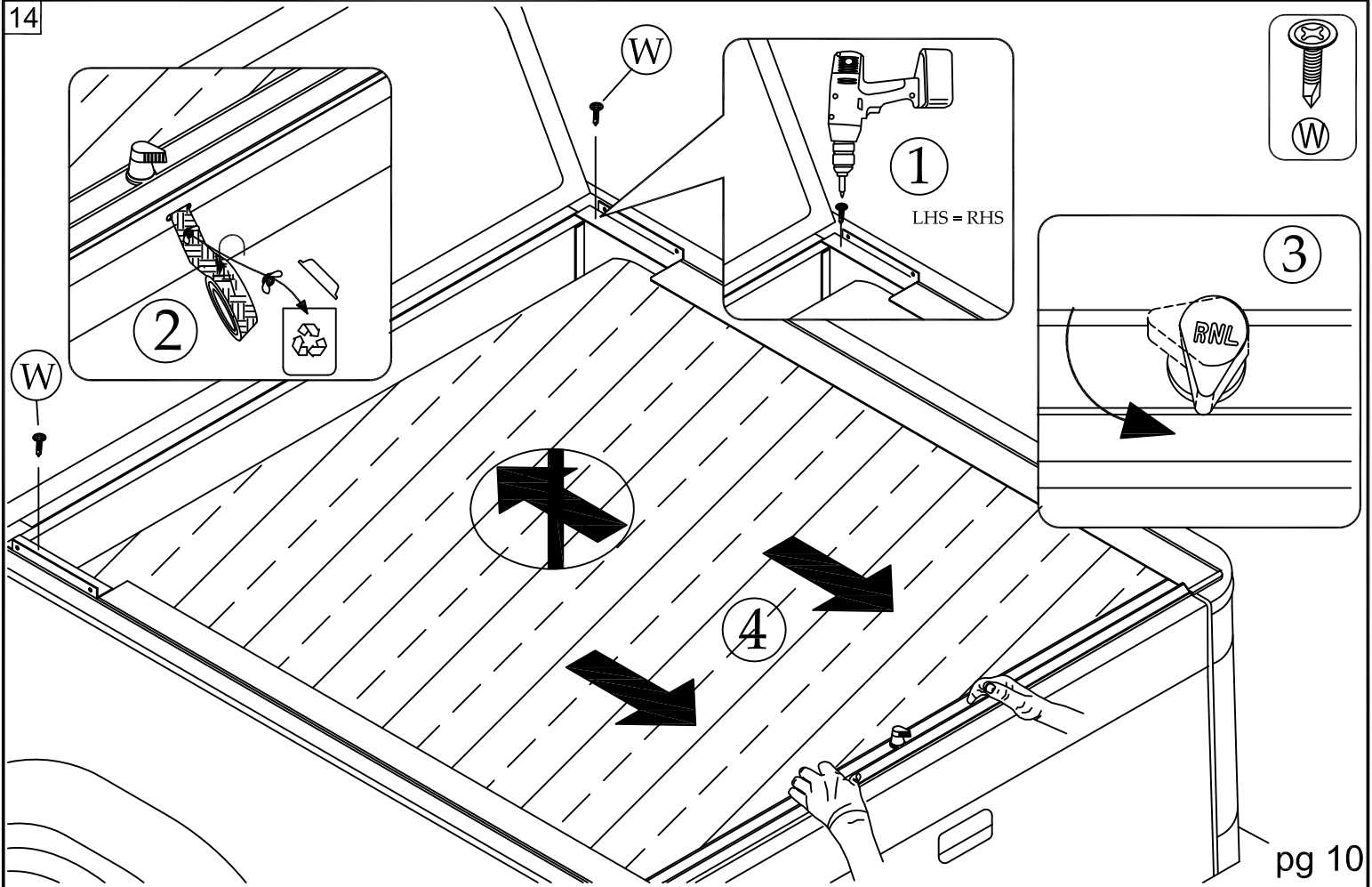
12 LHS = RHS



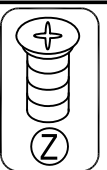
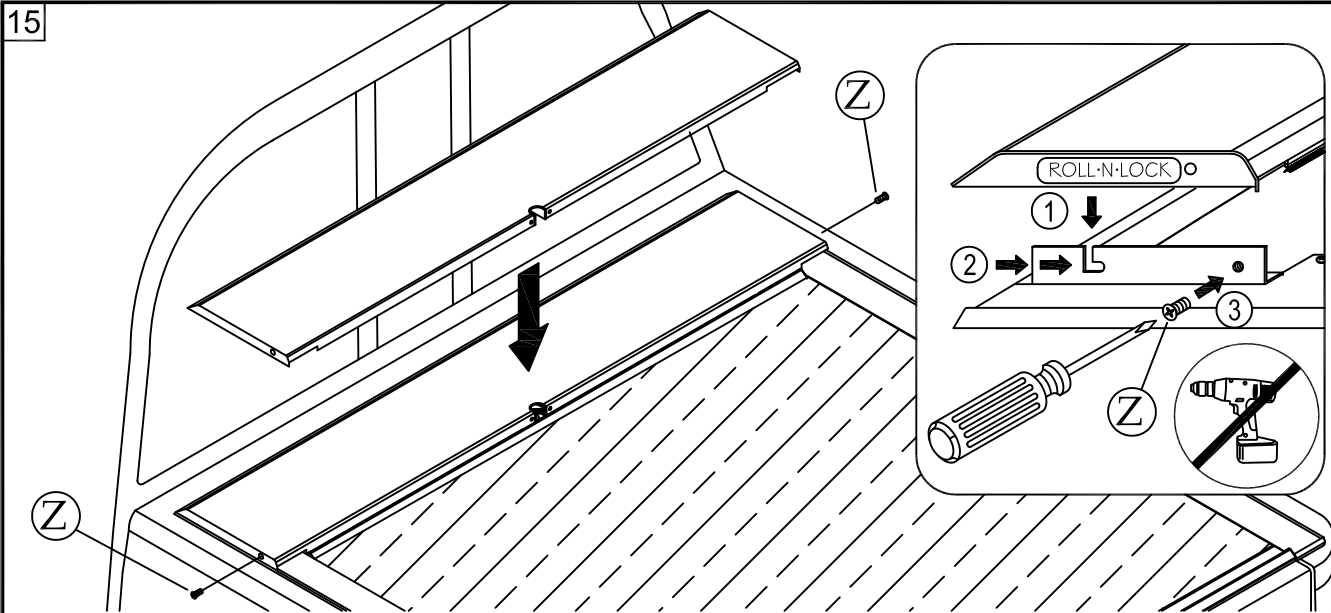
13 LHS = RHS



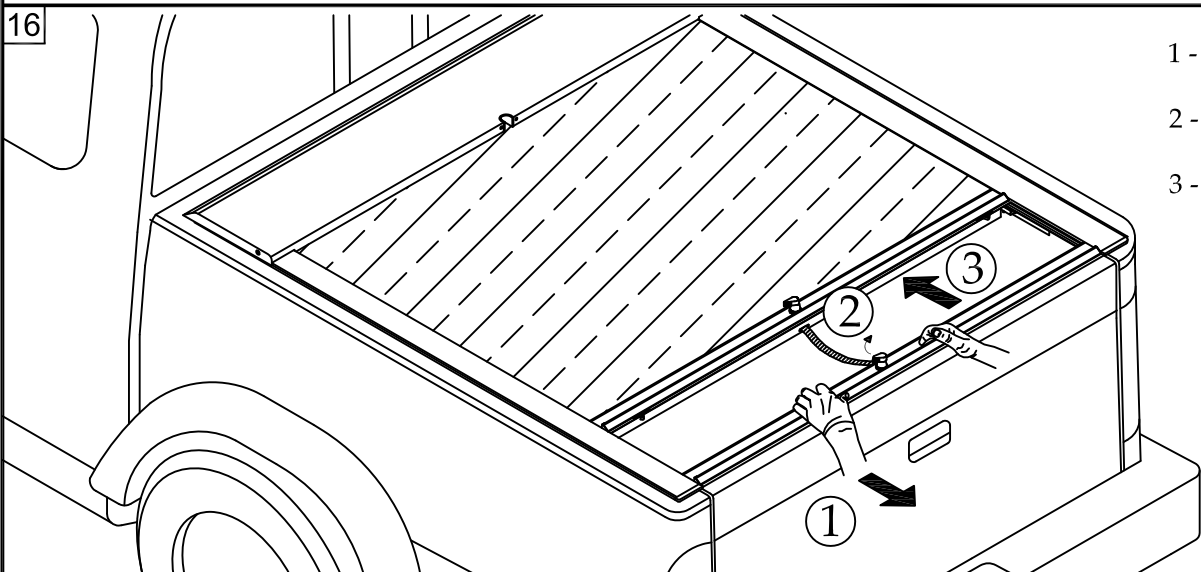
14



15



16



- 1 - Pull back on the handle to relieve tension.
- 2 - Turn the lock to the 10 o'clock position.
- 3 - Allow the cover to retract while holding on to the pull strap.

17

