

STEP 1 – PRIOR TO INSTALLATION

- A) Bushwacker only** approves installing the flares according to these written instructions with the hardware provided. **WARNING:** Failure to install according to these instructions will invalidate the warranty. This includes, but is not limited to using alternative installation methods, hardware, or materials. **DO NOT USE:** Loctite, SuperGlue, or similar products on the hardware or the flares.
- B) Fit:** Verify the fit of the flares to vehicle. (Some filing, sanding, or cutting may be necessary to ensure proper fit).
- C) Painting:** (Optional) if paint is desired it must be done prior to installing flares on vehicle. Clean outer surface with a good grade degreaser. **DO NOT USE LACQUER THINNER OR ENAMEL REDUCER AS A DEGREASER.** Wipe outer surface thoroughly with a tack rag prior to paint. Application of plastic adhesion promoter for ABS plastic as per your paint system manufacturer's recommendations is required. Paint flares using a high quality enamel, or polyurethane automotive paint. If painting edge trim (not recommended), use a flex additive.
- D) Performance:** Using larger Tires may increase the area required to turn the vehicle. Some Tire/Rim combinations may require lowering bump stops and or installing steering stops to prevent tire from contacting flare.
- E) Exhaust System:** Modifications may be necessary to maintain a minimum 4" clearance between flares and exhaust pipes. (Exhaust gases should not vent directly onto flares)
- F) Metal Protection:** All exposed fasteners and bare metal should be treated with rust resistant paint **BEFORE** installing flares. Spray inner fender wells with undercoating **AFTER** flare attachments have been completed.
- G) Decals:** Flares may interfere with existing decals on vehicle. If you wish, remove decals prior to installation of flares.

Jeep® Pocket Style® Fender Flares Rear Pair

Rear Part #10076-02

Rev-2 11/22/2013

For complete fitment info visit : www.bushwacker.com

TOOLS FOR EASY INSTALLATION:

- Pry Tool
- 3/8" Ratchet with 8mm Socket
- 10mm & 8mm Wrench
- Soft Wiping Cloth
- Isopropyl Alcohol
- #2 Phillips Stubby Screwdriver
- Awl
- Right Angle Screwdriver/Ratchet
- Electric Drill

TOOL REFERENCE:



#2 Phillips Stubby
Screwdriver

Awl Tool

Pry Tool

LIMITED LIFETIME WARRANTY AGAINST ANY MANUFACTURING DEFECTS

- To claim a warranty, you must provide Proof of Purchase.

Included in Hardware Kit:

- | | | | | | | |
|--|--|---|--|--|---|--|
| 1. 
AD1-0010,
LARGE ALCOHOL
PREP PAD,
2 pcs | 2. 
CL1-0023,
#8 "U" SPRING
NUT MAGNI565
8 pcs | 3. 
CL1-0022,
#10 "U" Clip,
8 pcs | 4. 
GR1-0002,
#14 Nut Plastic
Grommet,
6 pcs | 5. 
SW1-0044,
14 x 1/2" Phillips
Truss Screw,
6 pcs | 6. 
SW1-0056,
#8 x 3/4"
PH Screw,
16 pcs | 7. 
RV1-P014,
8mm x 12mm
Push Retainer Blk,
2 pcs |
| 8. 
SW1-0032,
M5-.8 x 9.5mm
SS Bttnhd Screw,
18 pcs | 9. 
WA1-0007,
.203x.625x.04
#10 SS Washer,
18 pcs | 10. 
MT1-0014,
1" x 1.5" x .01"
Black Tab,
4 pcs | 11. 
NU1-0010,
M5 x.8 Serrated
Flange Hex Nut,
18 pcs | 12. 
GP1-0006,
Wiper Style (2-
tape) Edge Trim,
151 inches | 13. 
ET1-0002,
Edge Trim Tool,
1 pc | 14. 
SW1-0022,
T-30 Torx Bit,
1 pc |

Component List:



STEP 2 - EDGE TRIM INSTALLATION

NOTE: Edge trim (GP1-0006) will be installed on the FLARES only, not the inner pieces.

A. Peel two to three inches of red vinyl backing away from Edge Trim (GP1-0006) tape. Applying the adhesive side of the edge trim to the inner side of the flare, affix the edge trim to the top edge of the flare (the portion that comes in contact with the vehicle).

B. Press edge trim into place along the top edge of the flare in one-foot increments, pulling red vinyl backing free as you continue to work your way around the top edge of the flare.



NOTE: COLOR INSTRUCTIONS AVAILABLE ONLINE AT “BUSHWACKER.COM”.

Rear Flare Pocket Hardware Installation:



Put a Washer (WA1-0007) on each Bolt (SW1-0032).



Put each Bolt/Washer combination through a pocket hole in the flare, with the Bolt head and Washer on the outside.



3

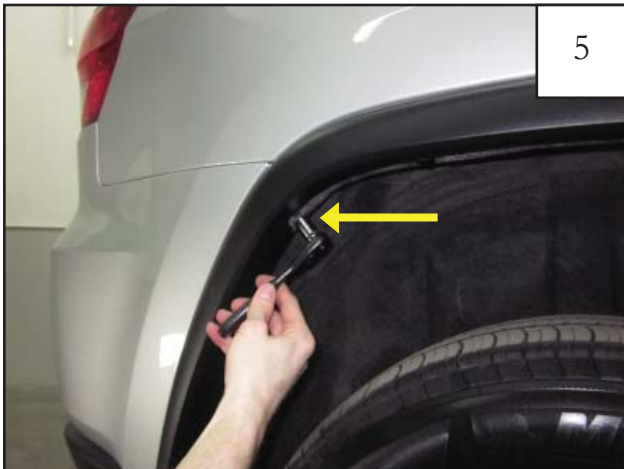
Place a Nyloc Nut (NU1-0010) and hand tighten over the end of each bolt.



4

Fully tighten using an 8mm wrench or 3/8 ratchet with a 8mm socket for the Nyloc Nut, and use the supplied Torx Bit (SW1-0052) and wrench for the Bolt. Repeat for remaining pockets.

Rear Flare Installation Procedures (Passenger's Side):



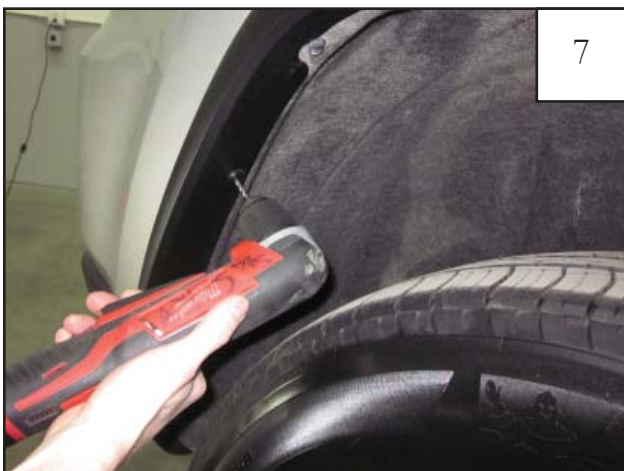
5

Using a 10mm socket and ratchet or a 10mm wrench, remove factory screw at indicated location in image above. Retain screw for reinstallation.



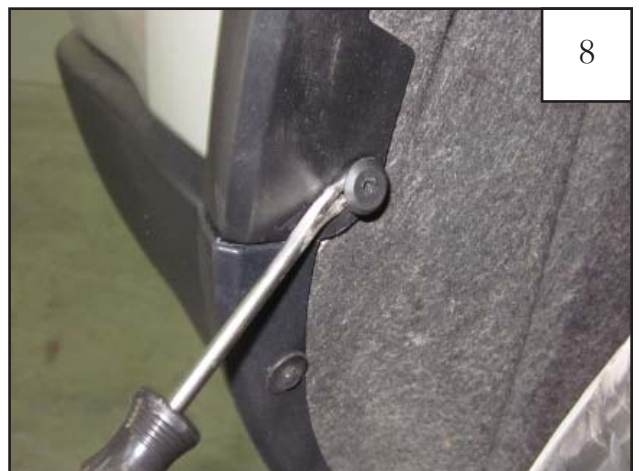
6

Factory fastener locations (2 places) to be removed.



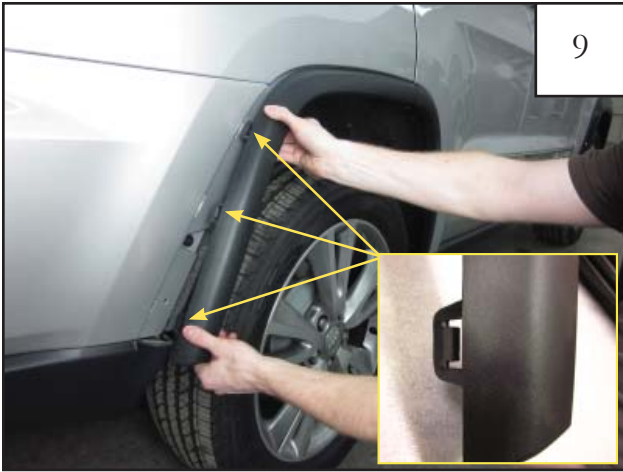
7

Using a 1/8" Drill bit, Drill out the center of top factory fastener in the rear of the wheel well indicated in Step 6. Use a pry tool to fully remove fastener.



8

Using a utility knife and/or pry tool, remove the bottom factory fastener indicated in Step 6.



Starting at the end of the factory rear main flare, firmly grip part and pull to remove from vehicle. *Note: You will hear popping sounds as the factory fasteners release from vehicle. This is normal. Use a pry tool to help release factory flare tabs from the rear bumper (see inset image).*



Use a pry tool to remove any remaining factory fasteners that may have stayed on the vehicle during the removal process. Remove factory fasteners from wheel well liner (2 places indicated by arrows).



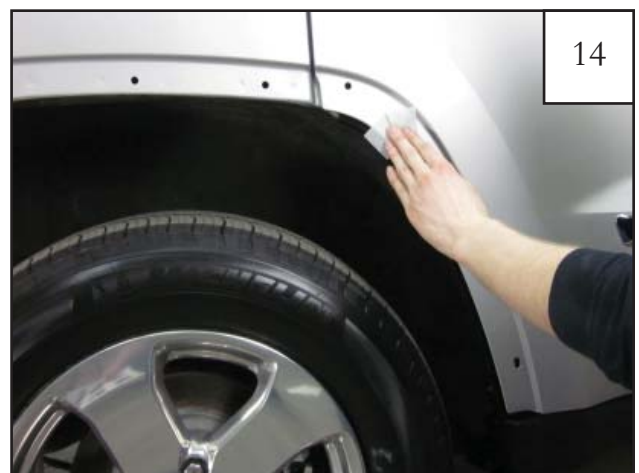
Starting at front of factory door flare, firmly grip part and pull to remove from vehicle. *Note: You will hear popping sounds as the factory fasteners release from vehicle. This is normal.*



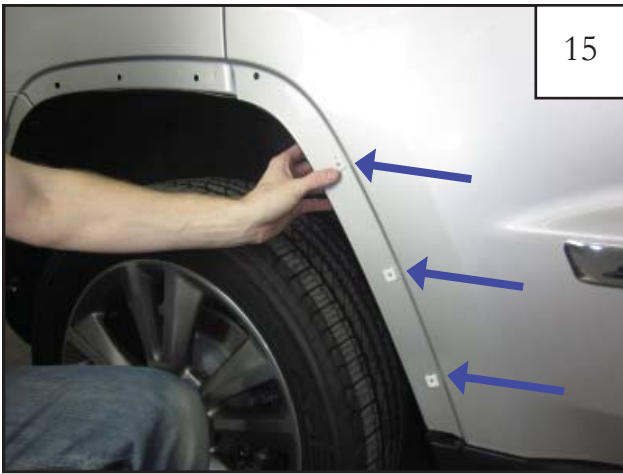
Use a pry tool to remove any remaining factory fasteners that may have stayed on the vehicle during the removal process.



Locate the Door Flare Inner Piece. Inner Door Pieces are marked "Passenger Side" & "Driver Side".

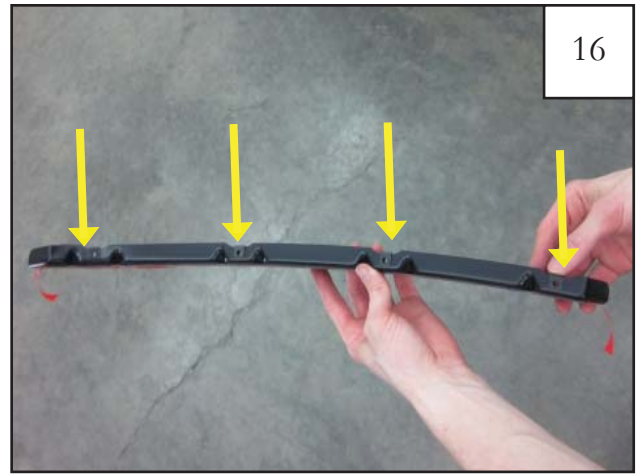


Using provided Alcohol Prep Pad (AD1-0010) wipe down area where Inner Door Piece tape will be adhered to vehicle.



15

Install provided Grommets (GR1-0002) at the (3) locations indicated in image above.



16

Inner Piece Clip (CL1-0023) locations (4 places). See next step (17) for a closer view of clip locations.



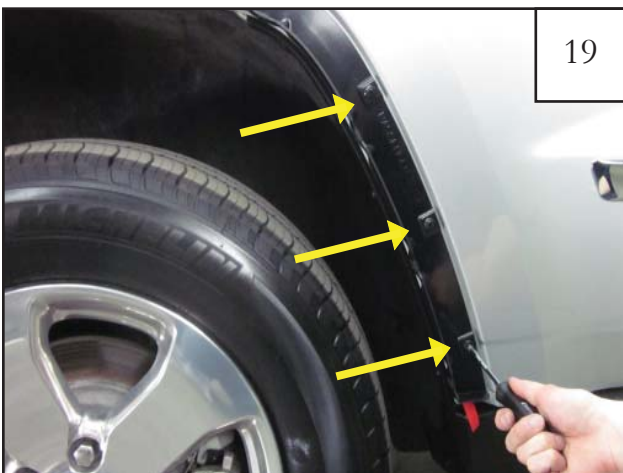
17

Install (4) provided Clips (CL1-0023) on Inner Door Piece at locations indicated in previous step.



18

Hold Inner Door Piece against vehicle aligning upper hole with factory hole in sheet metal and the remaining three holes with grommets installed in Step 15. Install (1) provided Push Retainer (RV1-0014) into top hole to secure Inner Door Piece to vehicle. *Note: Be sure to keep tape leaders exposed.*



19

Use a Phillips Head Screwdriver to install provided Screws (SW1-0044) into the three remaining hole locations. Do not fully tighten at this time.



20

Remove red tape liner from inner piece.



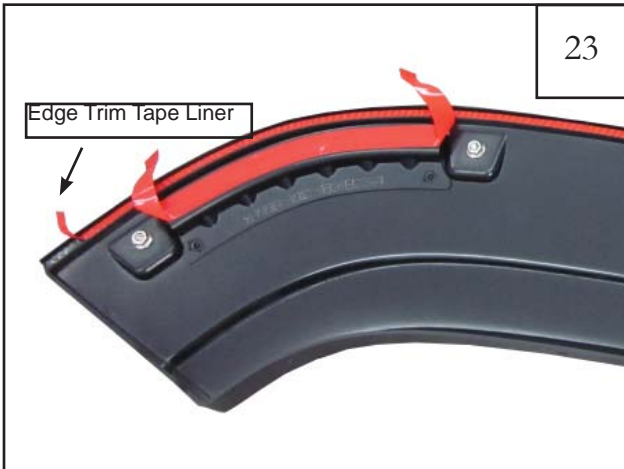
21

After the red liner is removed, *firmly* press the Inner Door Piece toward the vehicle for 10 seconds to adhere the tape to the vehicle surface. Repeat this process for the entire length of the part. The vehicle surface temperature must be between 65-110° F for proper adhesion. Once adhered, fully tighten all screws.



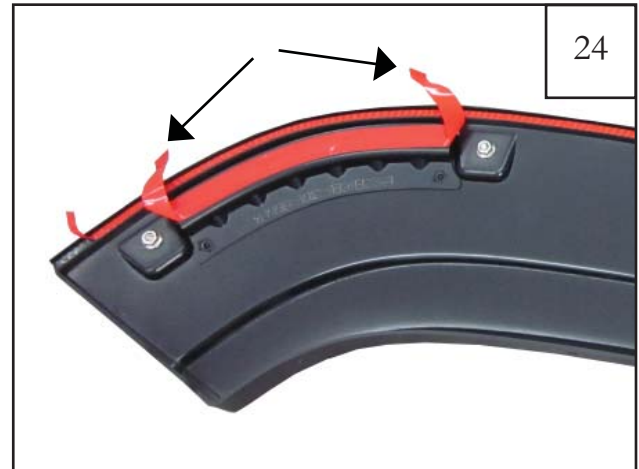
22

Using provided Alcohol Prep Pad (AD1-0010), clean sheet metal for door flare installation. Use upper style line on door as a guide.



23

Remove 1-2 inches of red tape liner from each end of installed edge trim and fold towards outside of the Door Flare. **NOTE: ONLY REMOVE 1-2" OF TAPE LINER FROM THE EDGE TRIM. DO NOT REMOVE LINER FROM TAPE PADS. SEE NEXT STEP.**



24

Fold tape leaders of tape pads towards the outer edge of Door Flare. **DO NOT REMOVE TAPE LINER FROM TAPE PADS AT THIS TIME.**



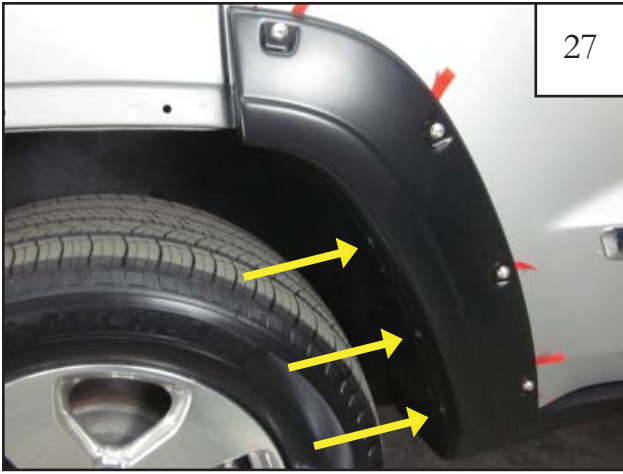
25

Place Door Flare on vehicle aligning with edge of door seam and installed Inner Door Piece. *Note: Ensure all tape liners are visible.*



26

While holding Door Flare on vehicle, Use a #2 Phillips Stubby Screwdriver and install (1) provided Screw (SW1-0056) at top most location indicated in image. Do not fully tighten at this time.



Ensuring part is aligned properly, start (3) Screws (SW1-0056) through Door Flare and into Clips on installed Inner Door Piece at indicated locations. Do not fully tighten at this time.



If part is aligned properly, tighten all screws using a Phillips Head Screwdriver. *Note: You can open door for better access if needed.*



Remove 1/2" wide red tape liner from the upper and lower tape pads on the Door Flare. **NOTE: DO NOT REMOVE TAPE LINER FROM EDGE TRIM AT THIS TIME.**



Firmly press the door flare toward the vehicle for 10 seconds to adhere the tape to the vehicle surface. The vehicle surface temperature must be between 65-110° F for proper adhesion. Allow 24 hours for full adhesion.



Use an 8mm socket and wrench to remove the factory screw at rear of wheel well on lower bumper.



At rear of wheel well, pull back factory liner and install (2) Clips (CL1-0022) over holes in plastic bumper at locations indicated in image above (Black Plastic Tabs are not needed on these plastic bumper hole locations). Replace factory wheel well liner back to original position.



33

Pull down factory liner at top of wheel well and install (2) Black Plastic Tabs (MT1-0014) and 2 Clips (CL1-0022) over factory holes (2 places). The hole in the Clip should align with the factory hole in the sheet metal covered by the Plastic Black Tab.



34

Using an awl tool make a hole thru each Black Plastic Tab (MT1-0014) using the hole in the clip as a guide. Replace factory wheel well liner to original position.



35

Hold Rear Main Flare up to wheel well to confirm fit. Do not install fasteners at this time.



36

Pull back 1-2 inches of red tape liner from each end of installed edge trim and fold towards outside of the flare.



37

Using provided Alcohol Prep Pad (AD1-0010), clean sheet metal of fender and bumper for Rear Main Flare installation. Use upper style line on fender as a guide.



38

While holding Flare on vehicle, install factory fasteners removed in Step 5 & Step 31 using a 10mm socket and wrench. Do not fully tighten at this time.



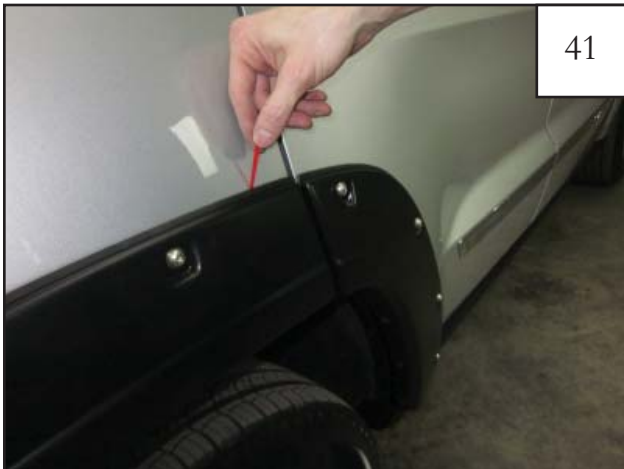
39

Using a Stubby or Right Angle Screwdriver, install supplied Screws (SW1-0056) thru flare and into clips installed in steps 32 & 33. Do not fully tighten at this time.



40

Screw/Clip locations (4 places). Ensure flare is properly aligned on vehicle. Style lines of Rear Door Flare and Rear Main Flare should match. Once properly aligned tighten all fasteners.



41

Remove the red tape liner from edge trim on the Door Flare and Rear Main Flare. *Note: Be careful not to tear red tape liner during removal process.*



42

After the red liner is removed, *firmly* press the Door Flare and Rear Main Flare toward the vehicle for 10 seconds to adhere the tape to the vehicle surface. Repeat this process for entire length of Flares. The vehicle surface temperature must be between 65-110° F for proper adhesion. Allow 24 hours for full adhesion.



43

Using flat end of supplied Edge Trim Tool (ET1-0002), seat edge trim against vehicle by inserting straight end between edge trim and flare at one end. Slide the tool along entire length of edge trim while pressing in towards the vehicle surface.



44

Use the hooked end of the edge trim tool to check for full adhesion. Do this by sliding it along the top of the edge trim to visually verify that the tape is adhered to the vehicle surface. Repeat step 69 if tape is not fully adhered to the vehicle surface.



Completed Rear Flare installation.