



STEP 1 – PRIOR TO INSTALLATION

- A) Bushwacker only approves installing the flares according to these written instructions with the hardware provided. WARNING:** Failure to install according to these instructions will invalidate the warranty. This includes, but is not limited to using alternative installation methods, hardware, or materials. **DO NOT USE:** Loctite, SuperGlue, or similar products on the hardware or the flares.
- B) Fit:** Verify the fit of the flares to vehicle. (Some filing, sanding, or cutting may be necessary to ensure proper fit).
- C) Painting:** (Optional) if paint is desired it must be done prior to installing flares on vehicle. Clean outer surface with a good grade degreaser. **DO NOT USE LACQUER THINNER OR ENAMEL REDUCER AS A DEGREASER.** Wipe outer surface thoroughly with a tack rag prior to paint. Application of plastic adhesion promoter for ABS plastic as per your paint system manufacturer's recommendations is required. Paint flares using a high quality enamel, or polyurethane automotive paint. If painting edge trim (not recommended), use a flex additive.
- D) Performance:** Using larger Tires may increase the area required to turn the vehicle. Some Tire/Rim combinations may require lowering bump stops and or installing steering stops to prevent tire from contacting flare.
- E) Exhaust System:** Modifications may be necessary to maintain a minimum 4" clearance between flares and exhaust pipes. (Exhaust gases should not vent directly onto flares)
- F) Metal Protection:** All exposed fasteners and bare metal should be treated with rust resistant paint BEFORE installing flares. Spray inner fender wells with undercoating AFTER flare attachments have been completed.
- G) Decals:** Flares may interfere with existing decals on vehicle. If you wish, remove decals prior to installation of flares.

Jeep® Pocket Style® Factory Coverage Fender Flares Rear Pair

Rear Part #10080-02

Rev-1 10/17/2014

For complete fitment info visit : www.bushwacker.com

TOOLS FOR EASY INSTALLATION:

- Pry tool
- Flat Head Screwdriver
- Electric Drill
- 5/16" Drill Bit
- Soft Wiping Cloth
- Isopropyl Alcohol
- #2 Phillips Screwdriver
- Masking Tape
- Vise Grips
- Awl

NOTE: These instructions involve cutting parts of the vehicle. It is important to read all instructions prior to cutting and installing of flares.

LIMITED LIFETIME WARRANTY AGAINST ANY MANUFACTURING DEFECTS

- To claim a warranty, you must provide Proof of Purchase.

Included in Hardware Kit:

- | | | | | | | | | | | | | | |
|----|--|----|--|-----|---|-----|---|----|--|----|--|----|--|
| 1. | | 2. | | 3. | | 4. | | 5. | | 6. | | 7. | |
| | SW1-0041, 5/16 x 18 x 1" SS Torx Screw, 16 pcs | | SW1-0057, #14 x 3/4" Phillips Truss Tap Screw, 12 pcs | | NU1-0013, #14 Black "U" Spring Nut, 12 pcs | | NU1-0017, 5/16-18 "U" Nut, 16 pcs | | WA1-0012, .320 x .700 x .03 SS Washer, 16 pcs | | RV1-P001, 1/4" Black Nylon Retainer, 12 pcs | | RV1-P006, 8 x 20mm Black Nylon Retainer, 18 pcs |
| 8. | | 9. | | 10. | | 11. | | | | | | | |
| | GP1-0002, Gimp Protector Gasket Edge Trim, 140 inches | | GP1-0008, Duro (NC02/S 70) Edge Trim, 136 inches | | ET1-0002, Edge Trim Tool, 1 pc | | SW1-0052, T-45 Torx Bit, 1 pc | | | | | | |

STEP 2 - EDGE TRIM INSTALLATION

A. Peel two to three inches of red vinyl backing away from edge trim tape. Applying the adhesive side of the edge trim to the inner side of the outer flare, affix the edge trim to the top edge of the flare (the portion that comes in contact with the vehicle).

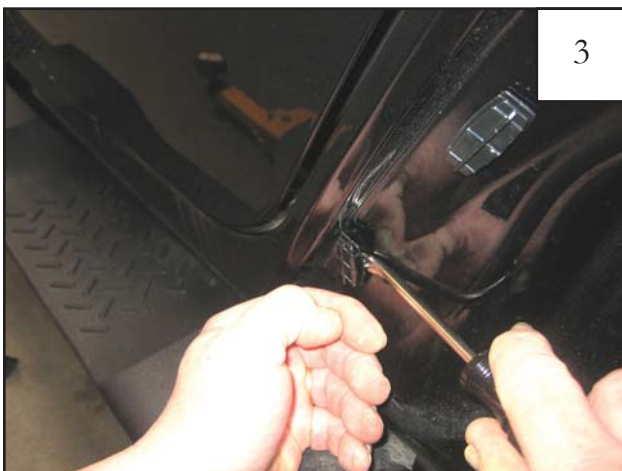
B. Press edge trim into place along the top edge of the flare in one-foot increments, pulling red vinyl backing free as you continue to work your way around the top edge of the flare.



Rear Factory Flare Removal:



Using a pry tool, pliers, or flat head screwdriver, remove the six plastic fasteners from inside of splash shield.



Using a pry tool or flat head screwdriver, remove any plastic clips that have remained in fender.

Rear Flare Installation (Driver's Side):



Clean fender area thoroughly with a soft clean cloth and isopropyl alcohol.



Make sure gimp and inner flare are clean. Peel 2" of liner from gimp (pin shape). Carefully position gimp as uniformly as possible along radius as shown, peeling liner as you go. Gimp can be repositioned as needed. NOTE: *It is better for gimp to be slightly below radius rather than above.*



When positioning gimp on narrow end of rear, fold flat edge of gimp over the edge of the part. (Gimp will continue over entire length of part.)



After gimp is properly placed, press to adhere properly and cut ends flush with ends of inner flare.



Position Inner Flare Piece on fender, aligning existing 5/16" holes in Inner Flare Piece with holes in fender. Install supplied Plastic Push Retainers (RV1-P006) (9 places).



Push Retainer locations.



10

Install supplied "U" Nuts, with the thread side in, over holes in Inner Flare Piece (8 places).



11

"U" Nut locations.



12

On backside of splash shield, use a utility knife to trim two plastic ribs flush with splash shield surface.



13

On rear end of splash shield using a grease pencil, measure in from last hole 1-1/4" and make a line from the edge of shield to style line. Then create a line from the style line out to the end of the splash shield as shown. Using sawsall to cut off section marked.



14

On front end of splash shield using a grease pencil and mark in 1/2" from the radius of splash shield and drawn a line till flush with outside edge of shield. Using a sawsall cut off section of splash shield where indicated.

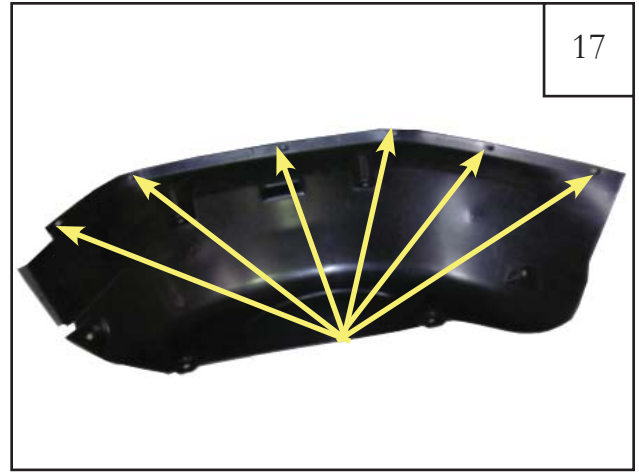


15

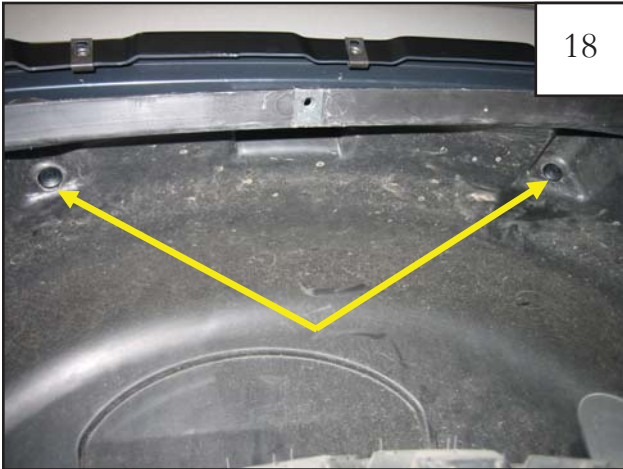
Use a flat head screwdriver to spread supplied #14 U-Clips for ease of installation.



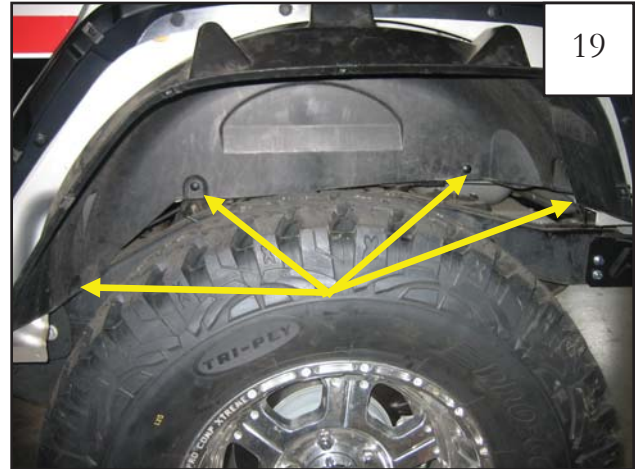
Install supplied #14 U-Clips over existing holes in splash shield (6 places). Flat side will be visible once splash shield is reinstalled.



#14 U-Clip locations.



Position splash shield in wheel well, and install two supplied Plastic Phillips Head Tuflocs in upper pockets using a pushing-twisting motion.



Install four supplied Plastic Phillips Head Tuflocs through splash shield and into vehicle body as shown.



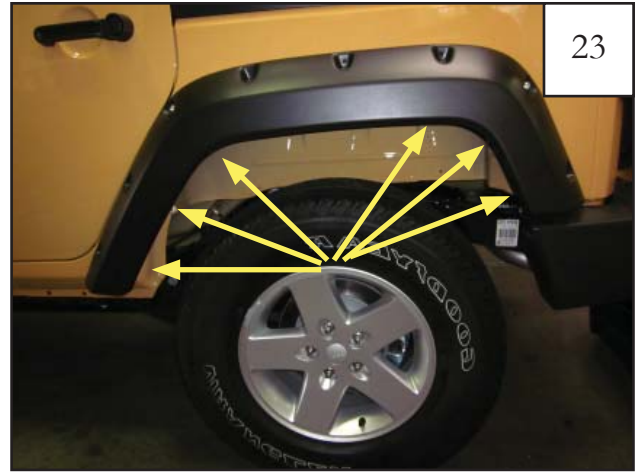
Position Rear Flare over Inner Flare Piece. Slide a supplied .700" Washer onto a supplied Torx Screw.



Start Screws/Washers through pocket holes in flare and into "U" Nuts installed in Step 11 (8 places) starting at the front and working your way to the back. Do not tighten.



Install supplied Truss Head Screws through holes in wheel well and into #14 U-Clips installed in Step 15 (6 places).

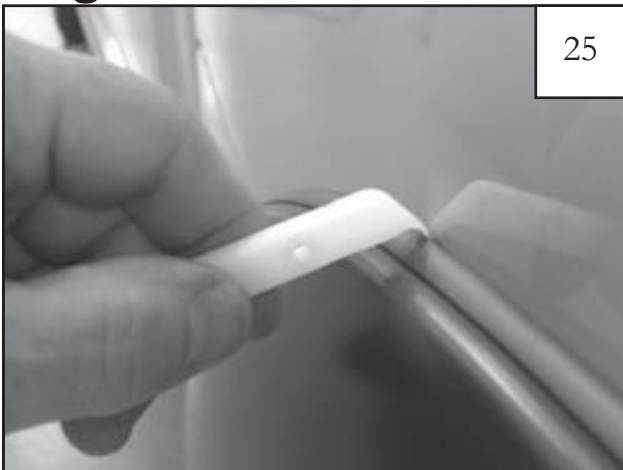


Truss Head Screw Locations.



Ensure fit, and tighten all screws

Edge Trim Tool Procedures:



Using supplied Edge Trim Tool (ET1-0002), seat edge trim against vehicle by hooking curved end under edge trim at one end of flare. Next, slide around outer edge of flare to the other end.



Using supplied Edge Trim Tool (ET1-0002), seat edge trim against vehicle by hooking curved end under edge trim at one end of flare. Next, slide around outer edge of flare to the other end.